



Outdoor signboards



STUNNING BEAUTY

Illumination signboards

Banners



Posters

■ Specifications

Item		JV300-130/160	
Printhead		On-demand piezo head (2 staggered printheads)	
Print resolution		360 dpi, 540 dpi, 720 dpi, 1080 dpi and 1440 dpi	
Maximum print width		1,361 mm (53.5 in)	1,610 mm (63.3 in)
Maximum media width		1,371 mm (53.9 in)	1,620 mm (63.7 in)
Ink	Type/Color	Eco-solvent ink • SS21 (C, M, Y, K, Lc, Lm, Lk, Or, W) • BS3* (C, M, Y, K) • BS4* (C, M, Y, K) • ES3 (C, M, Y, K, Lc, Lm, W) (* Only available in specific countries) Water-based sublimation ink • Sb53 (Bl, M, Y, K, DK, LBl, Lm) • Sb54 (Bl, M, Y, K, LBl, Lm)	
	Package size	SS21 : 440ml Ink cartridge/2L Ink pack (* White is provided in 220ml Ink cartridge only) ES3 : 440ml Ink cartridge (* White is provided in 220ml Ink cartridge only) BS3 : 600ml Ink pack/2L Ink pack BS4 : 600ml Ink pack/2L Ink pack Sb53 : 440ml Ink cartridge/2L Ink pack Sb54 : 440ml Ink cartridge/2L Ink pack *Optional Mimaki bulk ink system 3 (MBIS3) is required for using 2L Ink pack.	
Circulation system		MCT (Mimaki Circulation Technology) Only applies to white ink	
Media thickness		1.0 mm or less	
Rolled media weight		40 kg (88 lb) or less	
Certifications		VCCI class A, FCC class A, ETL UL 60950 CE Marking (EMC, Low voltage, and Machinery directive), CB, RoHS REACH, Energy Star, RCM	
Interface		USB 2.0, LAN for E-mail notification function	
Power supply		Single-phase (AC 100~120V / AC 220~240V) × 2	
Power consumption		1440W × 2 or less (100V), 1920W × 2 or less (200V)	
Operational environment		Temperature: 20~30 °C (59~86 °F) Humidity: 35~65% Rh (Non condensing)	
Dimensions (W × D × H)		2,525 × 700 × 1,392 mm (99 × 28 × 55 in.)	2,775 × 700 × 1,392 mm (109 × 28 × 55 in.)
Weight		170.6 kg (376.1 lb)	182.4 kg (402.1 lb)

User friendly RIP "RasterLink 6"

RasterLink 6

- ◆ More beautiful and advanced print results are achieved by following a user-friendly interface that is easy to operate.
- ◆ Color replacement function enhances the ability to re-create printed images.

<Supports Web update function>

- ◆ Program update and profile download can be easily performed via internet.

■ Supplies

Item	Color	Item No.	Remarks	
SS21	Cyan	SPC-0501C	440ml Ink cartridge	
	Magenta	SPC-0501M		
	Yellow	SPC-0501Y		
	Black	SPC-0501K		
	Light Cyan	SPC-0501LC		
	Light Magenta	SPC-0501LM		
	Orange	SPC-0501Or		
	Light Black	SPC-0501Lk		
	White	SPC-0504W-2		220ml Ink cartridge
	Cyan	SPC-0588C		2L Ink pack
Magenta	SPC-0588M			
Yellow	SPC-0588Y			
Black	SPC-0588K			
Light Cyan	SPC-0588LC			
Light Magenta	SPC-0588LM			
ES3	Orange	SPC-0588Or	440ml Ink cartridge	
	Light Black	SPC-0588Lk		
	Cyan	SPC-0440C		
	Magenta	SPC-0440M		
	Yellow	SPC-0440Y		
	Black	SPC-0440K		
BS3	Light Cyan	SPC-0440LC	220ml Ink cartridge	
	Light Magenta	SPC-0440LM		
	White	SPC-0433W-2		
	Cyan	SPC-0667C		600ml Ink pack
	Magenta	SPC-0667M		
BS4	Yellow	SPC-0667Y	2L Ink pack	
	Black	SPC-0667K		
	Cyan	SPC-0693C		
	Magenta	SPC-0693M		
	Yellow	SPC-0693Y		
	Black	SPC-0693K		
Sb53	Cyan	BS4-C-60	600ml Ink pack	
	Magenta	BS4-M-60		
	Yellow	BS4-Y-60		
	Black	BS4-K-60		
Sb54	Cyan	BS4-C-2L	2L Ink pack	
	Magenta	BS4-M-2L		
	Yellow	BS4-Y-2L		
	Black	BS4-K-2L		
	Blue	SB53-BL-44		440ml Ink cartridge
	Magenta	SB53-M-44		
Yellow	SB53-Y-44			
Black	SB53-K-44			
Deep Black	SB53-DK-44			
Light Blue	SB53-LBL-44			
Sb54	Light Magenta	SB53-LM-44	2L Ink pack	
	Blue	SB53-BL-2L		
	Magenta	SB53-M-2L		
	Yellow	SB53-Y-2L		
	Black	SB53-K-2L		
	Deep Black	SB53-DK-2L		
	Light Blue	SB53-LBL-2L		
	Light Magenta	SB53-LM-2L	440ml Ink cartridge *ECO PASSPORT® Certification Ink (Certificate No:NEP1605)	
	Blue	SB54-BLT-44		
	Magenta	SB54-MT-44		
	Yellow	SB54-YT-44		
	Black	SB54-KT-44		
Light Blue	SB54-LBT-44			
Sb54	Light Magenta	SB54-LMT-44	2L Ink pack *ECO PASSPORT® Certification Ink (Certificate No:NEP1605)	
	Blue	SB54-BLT-2L		
	Magenta	SB54-MT-2L		
	Yellow	SB54-YT-2L		
	Black	SB54-KT-2L		
	Light Blue	SB54-LBT-2L		
Light Magenta	SB54-LMT-2L			

* SS21 is GREENGUARD Gold certification ink.

● Some of the samples in this catalogue are artificial renderings. ● Specifications, design and dimensions stated in this catalogue may be subject to change without notice (for technical improvements, etc.). ● The corporate names and merchandise names written on this catalogue are the trademark or registered trademark of the respective corporations. ● Inkjet printers print using extremely fine dots, so colors may vary slightly after replacement of the printing heads. Also note that if using multiple printer units, colors could vary slightly from one unit to other unit due to slight individual differences. ● Please note that descriptions and data in this catalogue are as of May 2018.

Mimaki MIMAKI ENGINEERING CO., LTD.
 2182-3 Shigeno-otsu, Tomi-city, Nagano 389-0512, Japan
 Tel: +81-268-64-2281
 mimaki.com

Mimaki Global Network

USA	MIMAKI USA, INC.	Europe	MIMAKI EUROPE B.V.
Brazil	MIMAKI BRASIL COMERCIO E IMPORTACAO LTDA	Indonesia	PT. MIMAKI INDONESIA
India	MIMAKI INDIA PRIVATE LIMITED	Australia	MIMAKI AUSTRALIA PTY. LTD.
Taiwan	MIMAKI ENGINEERING (TAIWAN) CO.,LTD.	China	SHANGHAI MIMAKI TRADING CO., LTD.
Singapore	MIMAKI SINGAPORE PTE. LTD.		

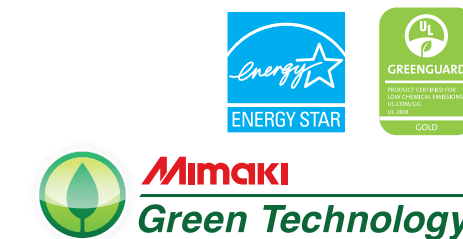
For
SIGN
GRAPHICS

Wide-format Inkjet Printer for
Solvent / Water-based Sublimation Inks

JV300series
JV300-130 / JV300-160

Mimaki

New Global Standard
 Outstanding Speed
 Stunning Beauty



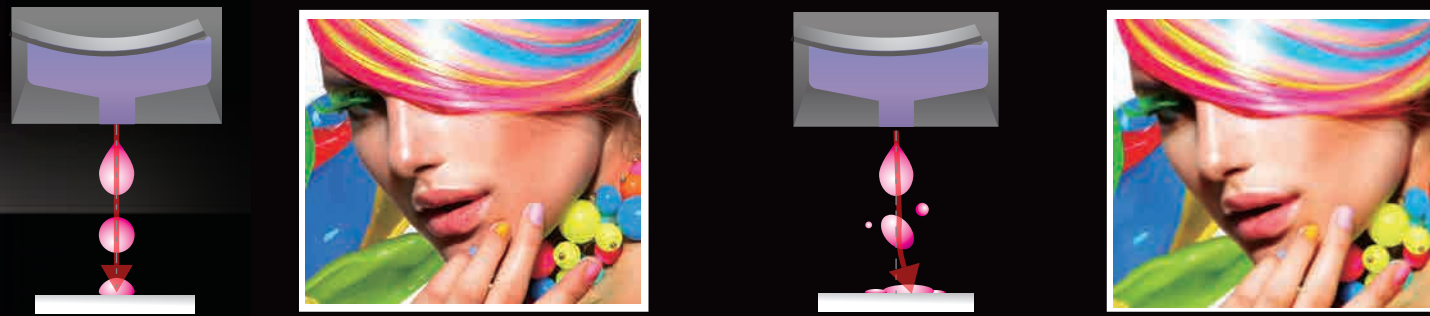
New Global Standard

The new standard for highest quality



Superior inkjet technology provides consistently high quality imaging

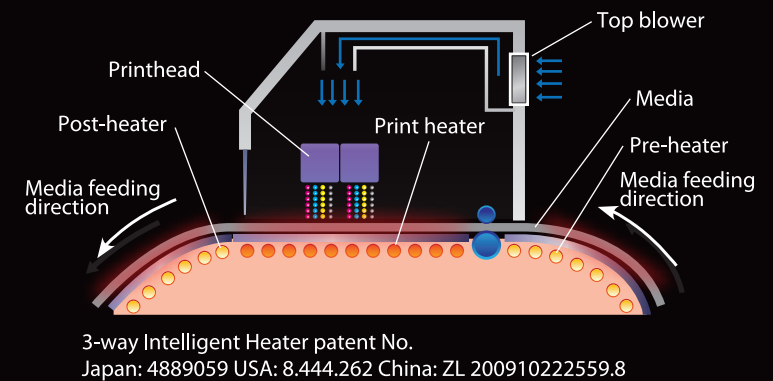
Using Mimaki's original superior inkjet control, the circularity of ink droplets is almost perfect, landing on the media precisely. With the improvement of preciseness in droplet placement, text, lines and edges are printed clearly.



3-Way intelligent heater

A 3-way intelligent heater fixes droplets placed on media. By using Mimaki's original technology in heating the media at a controlled temperature, ink can be fixed while maintaining high color development and high image quality. Thus the JV300 provides both steady color development and easy handling after printing.

- Pre-heater: Heats media to the optimum temperature before printing.
- Print heater: Dries ink after it lands on media before it bleeds, improving color development.
- Post-heater: Enhances ink drying and achieves stable take-up.
- Top blower: Air blower supports drying of ink.



3-way Intelligent Heater patent No.
Japan: 4889059 USA: 8.444.262 China: ZL 200910222559.8

Smooth color gradation printing

By ejecting 3 different dot sizes (Large/Medium/Small), images are expressed smoothly without graininess, even in large-format printing. Furthermore, the Large dot size is 35pl and by using this size effectively, light and shade can be expressed firmly while using higher printing speed settings.

A Variety of Expressiveness to Inspire Sensibility

Achieves a higher level of expression by using orange ink

Orange ink widens the color gamut and reproducibility, enabling to express food freshness and reproduce accurate corporate colors. This allows the unit to cover about 92%* of the PANTONE color chart.
*Cover rate as an approximate color.



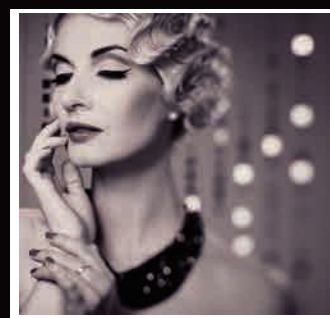
Conventional inks only



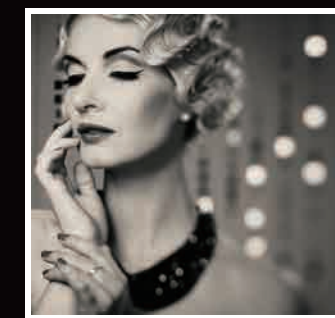
With orange ink

Accurate expression with light black ink

Gradation properties of grayscale are enhanced by the adoption of light black ink. In addition to accurate monochrome data reproduction, the unit also improves the expression of subtle color gradations such as human skin, providing a highly accurate expression available.



Conventional inks only



With light black ink

Can be used with Sb54 sublimation transfer ink

Using Sb54 sublimation transfer ink, which achieves crisp and colorful finishing with high ink density, the JV300 can also be used for sublimation transfer printing on polyester materials, improving profitability through lower ink costs and stable printing.

Reliable, User-Friendly Usability

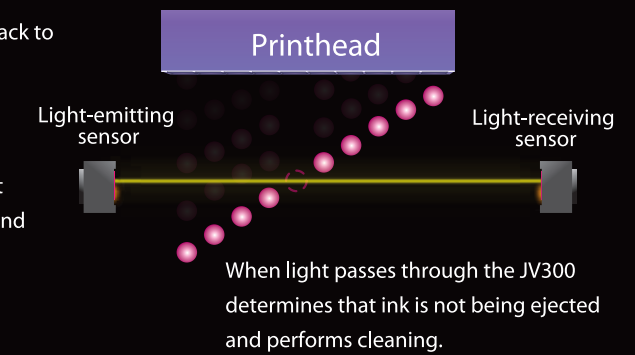
Continuous operation support pack to minimize downtime

The JV300-130/160 is prepared with the following continuous operation support pack to minimize downtime in case of emergency such as machine failure.

Continuous print operation solutions

The JV300 is equipped with Mimaki's original automatic NCU*. If the clogging is not resolved after cleaning, the JV300 sets the nozzle recovery function automatically and resumes printing. It will not print while nozzle drop out is occurring.

* NCU : Nozzle Check Unit

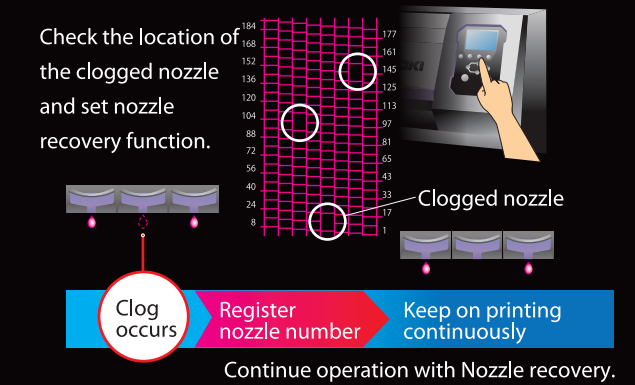


Clears nozzle drop out while maintaining print speed

Because machine is equipped with Mimaki's original NRS*1, continuous operation can be performed without affecting print speed, even while the printer is experiencing nozzle drop out. If nozzle drop out is not cleared with maintenance such as cleaning, printing without nozzle drop out is made possible by registering the nozzle that has experienced a drop out*2.

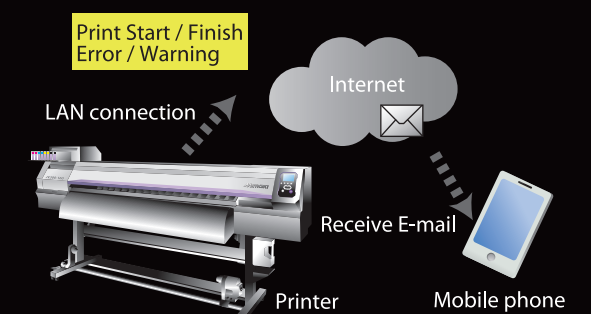
*1 Nozzle Recovery system

*2 10 nozzles can be registered per nozzle row



E-mail notification to know about print status anywhere, anytime

Using an E-mail notification, the JV300 sends Printer status such as print start/finish and print abort due to an error to a registered E-mail address. This allows users to know the printer status even while they are away.

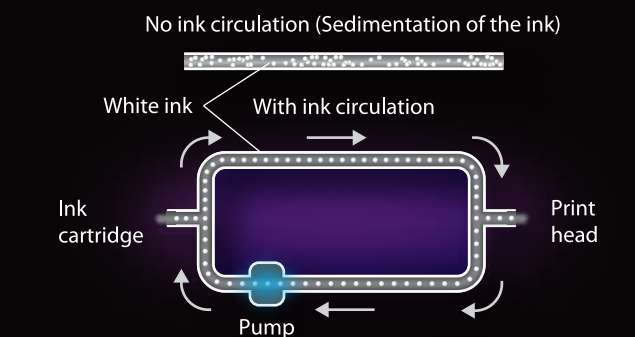


MCT* ink circulation system provides stable printing

MCT to effectively avoid the settling of white pigment in the ink lines by regularly circulating white ink is standard equipment. It prevents any print troubles and stable printing is assured from the startup time. In addition, MCT contributes to reduction of ink waste and thereby supporting environmentally and economically friendly applications.

*MCT is only applicable to white ink.

(MCT = Mimaki Circulation Technology)



Reliable ink supply system

UISS

The JV300 is equipped with a 2-ink cartridge per color. Even if one cartridge becomes empty, ink supply continues from the other cartridge, preventing print suspension from ink end.

Non-stop ink replacement

Cartridges that are out of ink can be replaced while printing. This prevents print suspension from ink end.

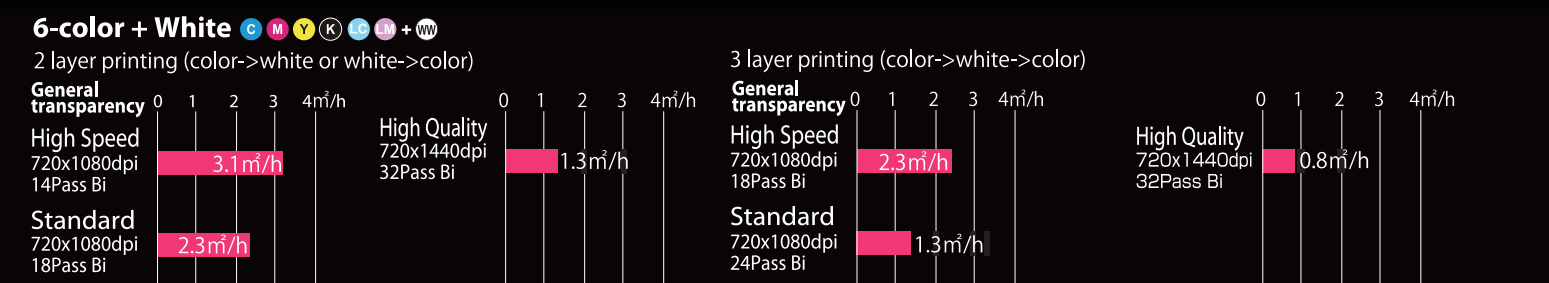
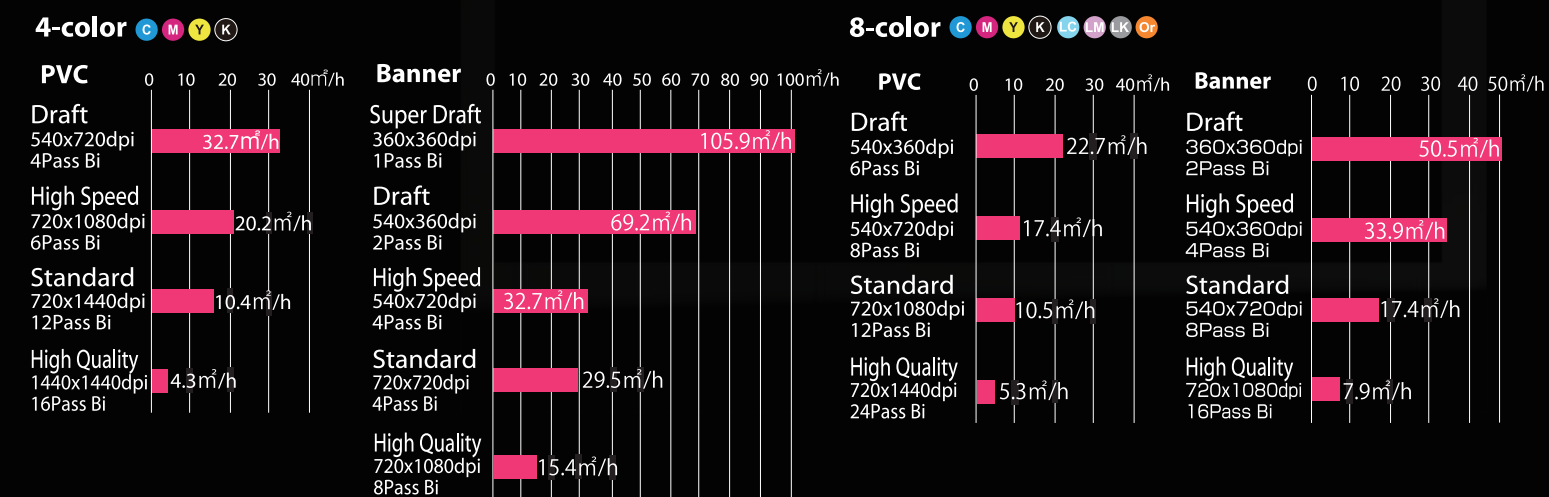
Equipped with MBIS III (Option)

Operating costs can be lowered by continuous printing with a high-capacity 2L ink pack.

Outstanding Speed

Maximum printing speed: 105.9m²/h

The JV300-130/160 provides both high productivity and high image quality. The graphs below show the speeds at which the JV300-160 prints in each mode.



Stunning Beauty

Reduces Banding

Mimaki's original MAPS2 technology, which reduces banding, has evolved further into MAPS3*. Banding is reduced by thinning out the dots and printing over it on areas where banding will be visible.

* MAPS3: Mimaki Advanced Pass System 3

